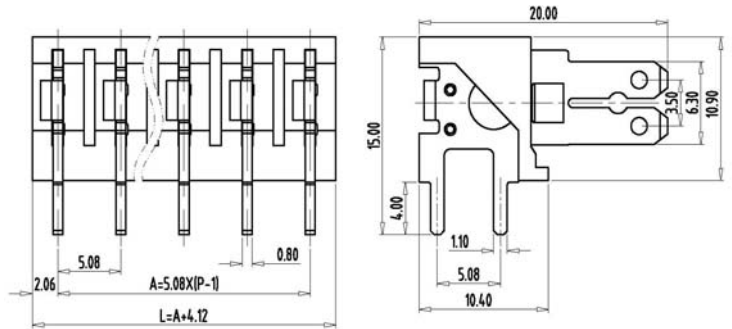
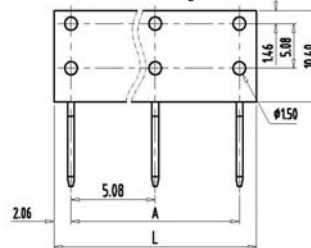


QUICK PLUG CONNECTOR P.C.B.-TQQ-A-2863-XXP-X



PCB Layout



■ 图示(Pic. shown) : TQQ-A-2863-06P-K

General: Quick plug connector P.C.B Rated : 300V,16A
Single row , 5.08mm pitch , 02-17 Pole
Orientation: 180°(plug-in to board)
Screw clamp unit:

认证 (Approval) :

| 技术参数 Technical Data | UL standard | | | IEC standard | | |
|--|---|----|----|--|---------|--------|
| | UL Application group | | | IEC过电压别/污染等级(IEC overvoltage category /pollution degree) | | |
| UL应用组别(UL Application group) | B | C | D | III / 3 | III / 2 | II / 2 |
| IEC过电压别/污染等级(IEC overvoltage category /pollution degree) | | | | | | |
| 额定电压(Rated voltage) | 300V | -- | -- | -- | -- | -- |
| 额定电流(Rated current) | 16A | -- | -- | -- | -- | -- |
| 额定连接容量(Rated connection capacity) | | | | -- | | |
| 绝缘材料(Insulation Material) | PC UL 94 V0 | | | | | |
| 电流承载部件材料和镀层(Material & Plating of Current carrier) | Steel , Tin plated | | | | | |
| 接线弹片材料(Material of Clamp spring) | -- | | | | | |
| 绝缘电阻(Insulation Resistance) | 500MΩ or more at DC500V | | | | | |
| 耐电压(1分钟)(Withstanding Voltage/1Min) | 1600V | | | | | |
| 额定冲击电压(Rated surge voltage) | | | | | | |
| 适合的母端接线范围(Suitable Wire Range in female contact) | 14AWG | | | | | |
| 固定螺丝(Mounting Screw) , 扭矩(torque) | -- | | | | | |
| 剥线长度(Wire stripping length) | -- | | | | | |
| 使用温度(Operating temperature) | -40°C up to +125°C | | | | | |
| 焊接方式(Soldering recommend) | Wave soldering ,260°C 5S Max (Single Wave) , 260°C 10S Max(Double Wave) | | | | | |

■ 订购方式(How to order)

