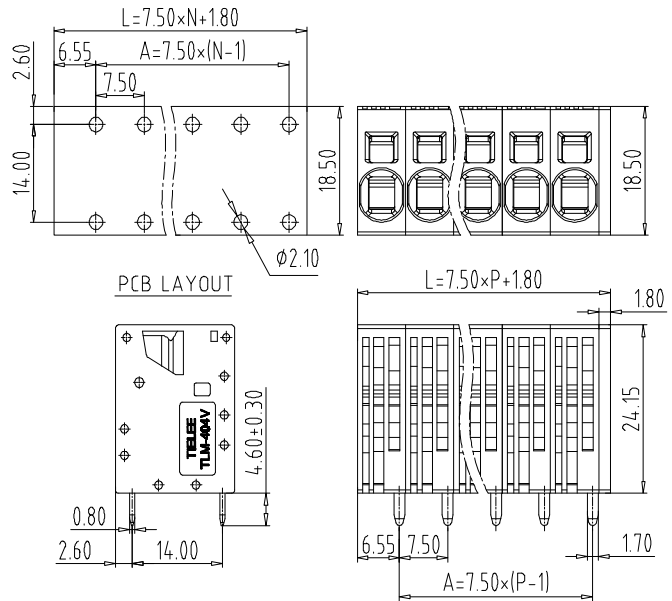
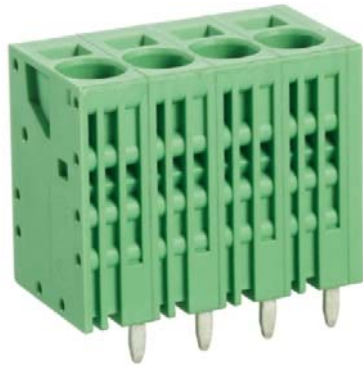


PCB terminal block — TLM series (Screwless Type) — TLM-404V



图示(Pic. shown) : TLM-404V-04P-G12

General: PCB terminal block Rated:1000V(630V \geq 02P),41A 10mm²
Single row , 7.50mm pitch , 01-16 Pole
Wiring orientation:90°(wire-to-board)
Screwless Type

认证 (Approval) :



技术参数 Technical Data	UL standard			IEC standard		
UL应用组别(UL Application group)	UL Application group			IEC过电压别/污染等级(IEC overvoltage category /pollution degree)		
IEC过电压别/污染等级(IEC overvoltage category /pollution degree)	B	C	D	III / 3	III / 2	II / 2
额定电压(Rated voltage)	300V	150V	300V	630V (01P) , 41A	1000V (01P) , 41A	1000V
额定电流(Rated current)	40A	40A	10A	400V(\geq 02P) , 41A	630V(\geq 02P) , 41A	41A
额定连接容量(Rated connection capacity)	24-8 AWG Sol&Str			0.2-6mm ² Sol&Str , 10mm ² (Sol)		
绝缘材料(Insulation Material)				PA66 UL94 V-0		
电流承载部件材料和镀层(Material & Plating of Current carrier)				Copper alloy , Tin plated		
接线弹片材料(Material of Clamp spring)				Stainless Steel (GrNi)		
绝缘电阻(Insulation Resistance)				500M Ω or more at DC500V		
耐电压(1分钟)(Withstanding Voltage/1Min)				--		
额定冲击电压(Rated surge voltage)				6KV		
接线螺丝(Wire clamp unit Screw) , 最大扭矩(torque Max.)				--		
固定螺丝(Mounting Screw) , 扭矩(torque)				--		
剥线长度(Wire stripping length)				15mm		
使用温度(Operating temperature)				-40°C up to +115°C		
焊接方式(Soldering recommend)	Wave soldering ,260°C 5S Max (Single Wave) , 260°C 10S Max(Double Wave)					

订购方式(How to order)

