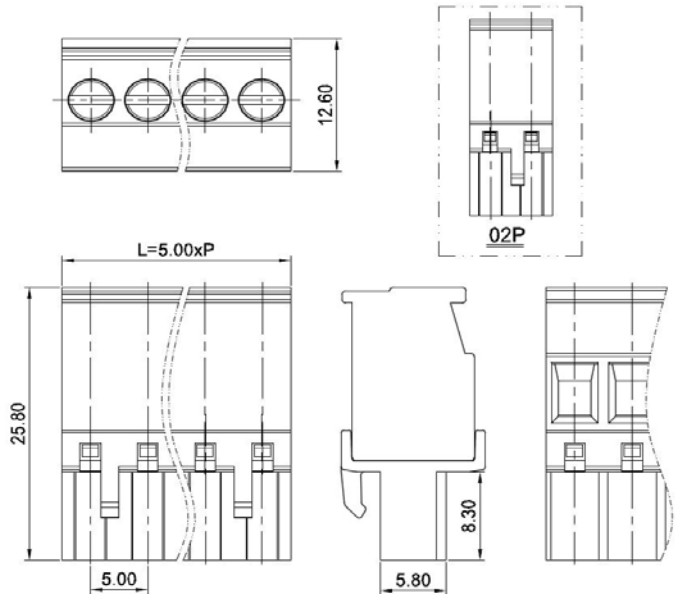


PCB Connector — TLP series ( Female Connector )— TLPS-200RL



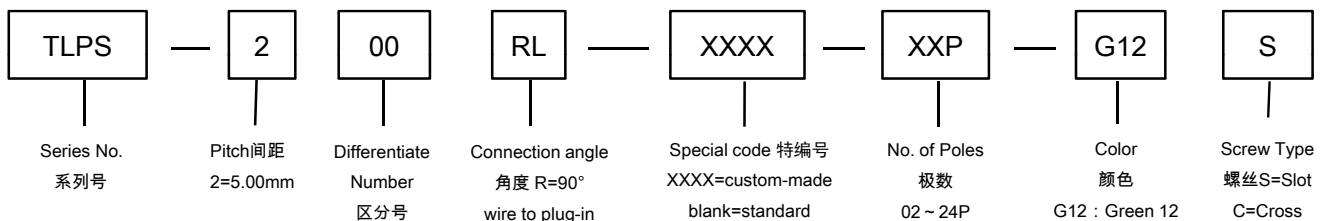
**图** 示(Pic. shown) : TLPS-200RL-05P-G12S

General.	PCB Connector Rated : 630V, 15A , 4mm <sup>2</sup>
	Single row , 5.00mm pitch , 02 ~ 24 Pole
	Wiring orientation: 90°(wire to plug-in )
	Screw clamp unit: M3, 0.5 ~ 0.7N·m

认证 ( Approval ) :   

技术参数 Technical Data	UL standard			IEC standard		
	UL应用组别(UL Application group)	UL Application group			IEC过电压别/污染等级(IEC overvoltage category /pollution degree)	
IEC过电压别/污染等级(IEC overvoltage category /pollution degree)	B	C	D	III / 3	III / 2	II / 2
额定电压(Rated voltage)	300V	--	300V	250V	320V	630V
额定电流(Rated current)	16A	--	10A	15A	15A	15A
额定连接容量(Rated connection capacity)	30 ~ 12AWG Sol&Str			0.2 ~ 4mm <sup>2</sup> Sol&Str		
绝缘材料(Insulation Material)	PA66 UL94 V-0					
电流承载部件材料和镀层( Material & Plating of Current carrier )	Copper alloy , Tin plated					
接线弹片材料(Material of Clamp spring )	--					
绝缘电阻(Insulation Resistance)	500MΩ or more at DC500V					
耐电压(1分钟)(Withstanding Voltage/1Min)	2000V					
额定冲击电压(Rated surge voltage)	4000V					
接线螺丝(Wire clamp unit Screw) , 最大扭矩( torque Max. )	M3, 0.5 ~ 0.7N·m					
固定螺丝(Mounting Screw) , 扭矩(torque)	--					
剥线长度(Wire stripping length)	6.5 ~ 7.5mm					
使用温度(Operating temperature)	-40°C up to +115°C					
焊接方式(Soldering recommend)	--					

**订** 购方式(How to order)



■ 编码片 Coding key



P/N:  
TLPCK-002-S

■ 针座 ( Pin header ) — single row



P/N : TLPH-200V  
Orientation :  
90° ( plug-in to board )  
Rated:630V,20A  
Open side(stack available)



P/N : TLPHC-200V  
Orientation :  
90° ( plug-in to board )  
Rated:630V,20A  
Closed side

■ 针座 ( Pin header ) — single row



P/N : TLPH-200R  
Orientation :  
180° ( plug-in to board )  
Rated:630V,20A  
Open side(stack available)



P/N : TLPHC-200R  
Orientation :  
180° ( plug-in to board )  
Rated:630V,20A  
Closed side

■ 针座 ( Pin header ) — single row



P/N : TLPH-200R-1603  
Orientation :  
180° ( plug-in to board )  
Rated:630V,20A  
Open side(stack available)



P/N : TLPHC-200R-1603  
Orientation :  
180° ( plug-in to board )  
Rated:630V,20A  
Closed side

■ 针座 ( Pin header ) — single row



P/N : TLPH-200V-XXP-HT  
Orientation :  
90° ( plug-in to board )  
Rated:630V,20A  
Open side(stack available)



P/N : TLPHC-200V-XXP-HT  
Orientation :  
90° ( plug-in to board )  
Rated:630V,20A  
Closed side

■ 针座 ( Pin header ) — single row



P/N : TLPH-200R-XXP-HT  
Orientation :  
180° ( plug-in to board )  
Rated : 630V,20A  
Open side(stack available)



P/N : TLPHC-200R-XXP-HT  
Orientation :  
180° ( plug-in to board )  
Rated:630V,20A  
Closed side

■ 针座 ( Pin header ) — dual row in 1 plane



P/N : TLPHDC-200V  
Orientation :  
90° ( plug-in to board )  
Rated:320V,20A  
Closed side



P/N : TLPHDC-200R  
Orientation :  
180° ( plug-in to board )  
Rated : 320V,20A  
Closed side

■ 针座 ( Pin header ) — single row



P/N : TLPH-201R  
Orientation :  
Right(Fix on PCB )  
Rated : 630V,20A  
Open side(stack available)



P/N : TLPH-201RL  
Orientation :  
Left(Fix on PCB)  
Rated : 630V,20A  
Open side(stack available)

■ 针座 ( Pin header ) — dual row staggered



P/N : TLPHD-203V  
Orientation :  
90° ( plug-in to board )  
Rated : 320V,20A  
Open side(stack available)



P/N : TLPHD-203R  
Orientation :  
180° ( plug-in to board )  
Rated : 320V,20A  
Open side(stack available)

■ 针座 ( Pin header ) — dual row staggered



P/N : TLPHDC-203V  
Orientation :  
90° ( plug-in to board )  
Rated : 320V,20A  
Closed side



P/N : TLPHDC-203R  
Orientation :  
180° ( plug-in to board )  
Rated : 320V,20A  
Closed side