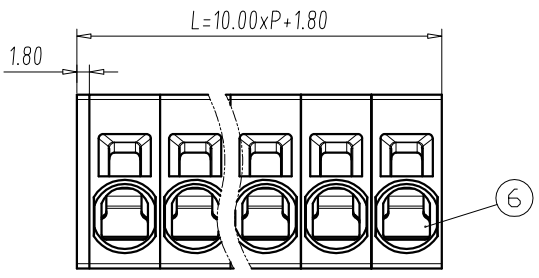
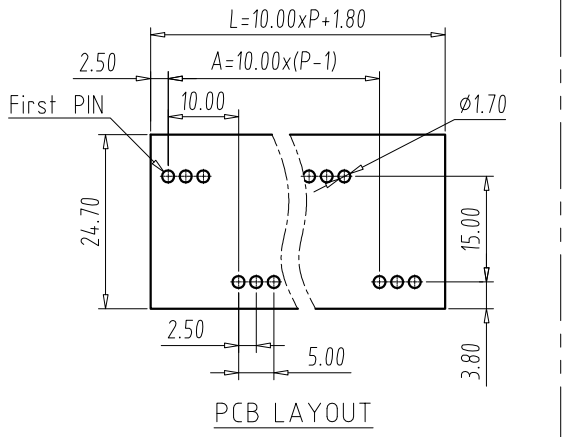
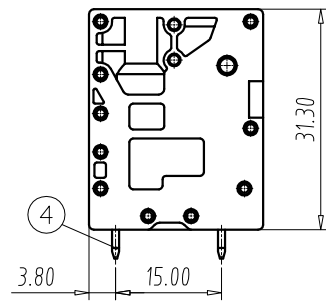
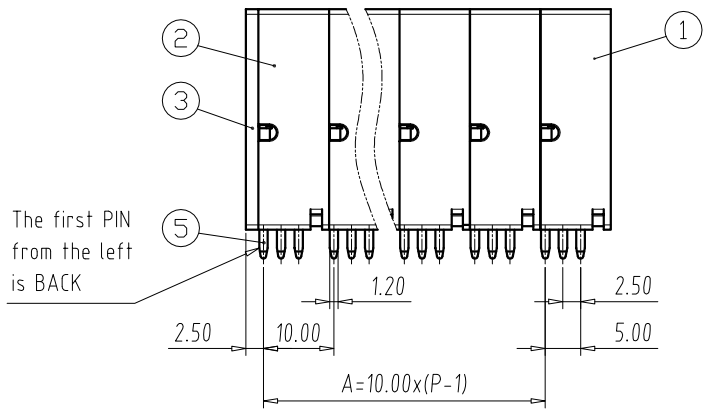
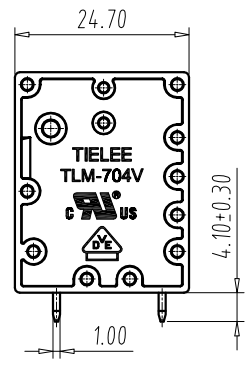


FILE: \_\_\_\_\_

REV	E.C.N NO.	CONTENT	CHK	DATE
V1.0	S2408008	Add VDE LOGO	GJW	2024.08.30



- NOTES:**
- UL:
    - Rating:600V, 66A
    - Insulation Withstands Voltage:AC2200V/MIN
    - Suitable Electric Wire:20AWG~4AWG
  - IEC:
    - Rating:1000V, 76A
    - Rate Impulse Voltage:8000V
    - Insulation Resistance:500MΩ or more at DC500V
    - Contact Resistance:≤5mΩ
    - Material Group: I, Pollution Degree:2
    - Overvoltage Category:III
    - Suitable Electric Wire:0.75~16mm<sup>2</sup>
  - Using Temperature Range:-40℃~+115℃
  - Strip length:18mm
  - RoHS compliance
  - XXP:Even number, Q"TY=P/2;  
XXP:Odd number, Q"TY=(P-1)/2;
  - XXP:Even number, Q"TY=P/2;  
XXP:Odd number, Q"TY=(P+1)/2.



DIM	P	02	03	04	05	06	
L		21.80	31.80	41.80	51.80	61.80	
A		10.00	20.00	30.00	40.00	50.00	
DIM	P	07	08	09	10	11	12
L		71.80	81.80	91.80	101.8	111.8	121.8
A		60.00	70.00	80.00	90.00	100.0	110.0

Total Pitch Tolerances in mm										Nominal dimension range in mm									
over	over	over	over	over	over	over	over	over	over	over	over	over	over	over	over	over	over	over	over
0	30	53	70	90	115	150	200	250	320	0	30	53	70	90	115	150	200	250	320
to	to	to	to	to	to	to	to	to	to	to	to	to	to	to	to	to	to	to	to
±0.20	±0.25	±0.3	±0.35	±0.44	±0.55	±0.70	±0.85	±1.00	±1.20	±0.25	±0.30	±0.35	±0.44	±0.55	±0.70	±0.80	±0.90	±1.20	

6	SPRING COIL	P	STAINLESS STEEL	/
5	BACK SOLDER PIN	NOTE7	Copper Alloy	Tin Plated
4	FRONT SOLDER PIN	NOTE6	Copper Alloy	Tin Plated
3	COVER	1	PA66	UL94 V-0
2	HOUSING-2	P-1	PA66	UL94 V-0
1	HOUSING-1	1	PA66	UL94 V-0
ITEM	NAME OF PART	Q"TY	MATERIAL	NOTE

DWG.	ZZW	DATE	2020.10.28	UNITS	MM	SHEET/OF	1/1
CHK.		DATE		SCALE	1:1	A4	
APP.		DATE		NAME <b>TLM-704VA-XXP-X</b>			
<b>TIANLI</b> ELECTRICAL MACHINERY(NINGBO)CO.,LTD.				DWGNO.	TLDW-TLM704VAXXPX		