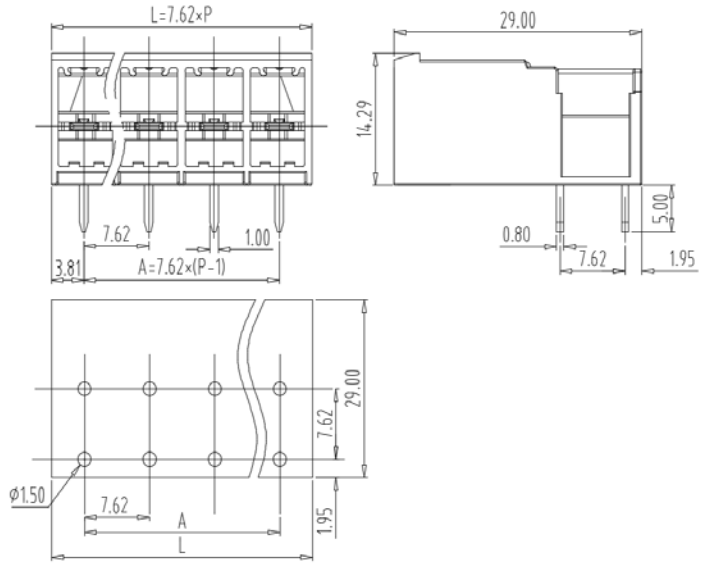





PCB Connector — TLP series ( Pin header ) — TLPHC-516R



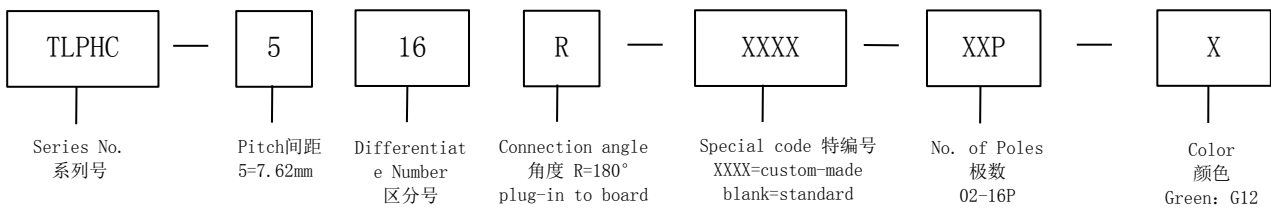
**图示 (Pic. shown): TLPHC-516R-04P-G12**

General.  
PCB Connector Rated : 1000V, 32A  
Single row , 7.62mm pitch , 02-16 Pole  
Orientation: 180° (plug-in to board)

认证 (Approval) :   

技术参数 Technical Data	UL standard			IEC standard		
UL应用组别 (UL Application group)	UL Application group			IEC过电压别/污染等级 (IEC overvoltage category / pollution degree)		
IEC过电压别/污染等级 (IEC overvoltage / pollution degree)	B	C	D	III / 3	III / 2	II / 2
额定电压 (Rated voltage)	300V	300V	600V	500V	630V	1000V
额定电流 (Rated current)	30A	30A	5A	32A	32A	32A
额定连接容量 (Rated connection capacity)	--			--		
绝缘材料 (Insulation Material)	PA66 UL94 V-0					
绝缘材料组别 (Material group)	I					
电流承载部件材料和镀层 (Material & Plating of Current)	Copper alloy , Tin plated					
接线弹片材料 (Material of Clamp spring )	--					
耐电压 (1分钟) (Withstanding Voltage/1Min)	1600V					
额定冲击电压 (Rated surge voltage)	6000V					
接线螺丝 (Wire clamp unit Screw), 最大扭矩 (torque Max. )	--					
固定螺丝 (Mounting Screw), 扭矩 (torque)	--					
剥线长度 (Wire stripping length)	--					
使用温度 (Operating temperature)	-40° C up to +115° C					
存储温度 (Storage temperature)	-40° C up to +70° C					
存储相对湿度 (Storage relative humidity)	≤70%					
焊接方式 (Soldering recommend)	Wave soldering , 260° C 8S Max					

**订购方式 (How to order)**



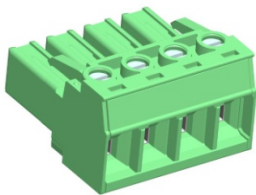
Web: www.tielee.com TEL: +86-574-6347-9600, 6389-6436 Mail: sale@china-tianli.cn  
地址: 中国浙江省宁波杭州湾新区庵东工业园区纬三路138号  
ADD: 138, Weisan Rd., Andong Development Zone, Hangzhou Bay Area, Ningbo, Zhejiang, China

■ 编码片 Coding key



P/N:  
TLPCK-004-S

■ 插头 (Female Connector) — single row



P/N: TLPS-516V  
Wiring orientation:  
180° (wire to plug-in )  
Rated : 1000V, 32A, 4mm<sup>2</sup>  
Screw clamp unit: M3 , 0.5~0.7Nm



P/N: TLPS-501  
Wiring orientation:  
180° (wire to plug-in )  
Rated : 1000V, 41A, 6.0mm<sup>2</sup>  
Screw clamp unit: M3 , 0.8N.m