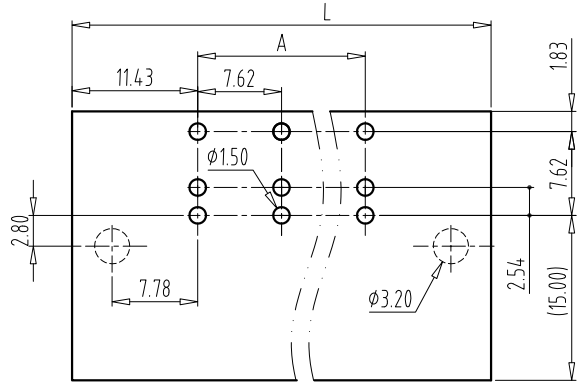
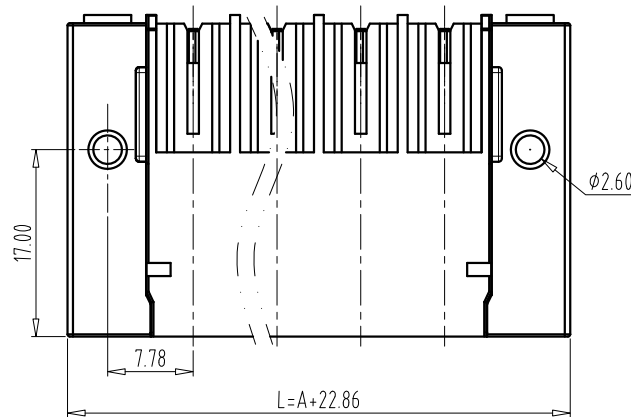


FILE: TLPX501\TLPHW-501RL-XXP-X

REV	E.C.N NO.	CONTENT	CHK	DATE
V1.0		ORIGINAL	HSR	2024.01.15

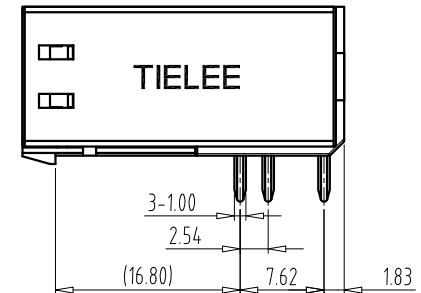
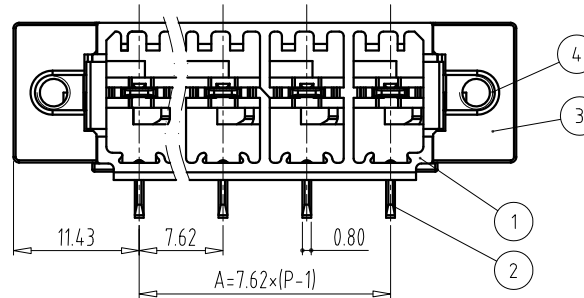
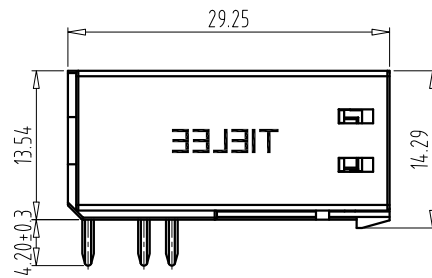


PCB LAYOUT
S=1.5:1



NOTES:

- UL:
Rating:300V, 41A;
Insulation Withstands Voltage:AC3300V/1MIN;
Using Temperature Range:-40°C~+115°C;
- IEC:
Rating:630V, 41A;
Rate Impulse Voltage:6000V;
Insulation Resistance:500MΩ or more at DC500V;
Contact Resistance: ≤5mΩ
Material Group: I;
Pollution Degree:3;
Overvoltage Category:III;
Using Temperature Range:-40°C~+120°C;
- RoHS compliance;



DIM	P	13	14	15	16
L		114.30	121.92	129.54	137.16
A		91.44	99.06	106.68	114.30

DIM	P	2	3	4	5	6	7	8	9	10	11	12
L		30.48	38.1	45.72	53.34	60.96	68.58	76.20	83.82	91.44	99.06	106.68
A		7.62	15.24	22.86	30.48	38.1	45.72	53.34	60.96	68.58	76.2	83.82

Total Pitch Tolerances in mm								Nominal dimension range in mm							
over	over	over	over	over	over	over	over	over	over	over	over	over	over	over	over
0	30	53	70	90	115	150	200	0	30	53	70	90	115	150	200
to	to	to	to	to	to	to	to	to	to	to	to	to	to	to	to
30	53	70	90	115	150	200	250	30	53	70	90	115	150	200	250
±0.20	±0.25	±0.3	±0.35	±0.44	±0.55	±0.70	±0.85	±1.00	±0.25	±0.30	±0.35	±0.44	±0.55	±0.70	±0.80

4	NUT	2	STEEL	M3/Zn Plated
3	FLANGE LOCK	2	PBT	UL94V-0
2	SLODER PIN	P	COPPER ALLOY	Tin Plated
1	HOUSING	1	PA66	UL94V-0
ITEM	NAME OF PART	Q'TY	MATERIAL	NOTE

DWG.	SHIKE	DATE	2020.08.08	UNITS	MM	SHEET/OF	1/1
CHK.		DATE		SCALE	15:1	A4	
APP.		DATE		NAME: TLPHW-501RL-XXP-X			
 ELECTRICAL MACHINERY(NINGBO)CO.,LTD.				DWGNO.	TLDW-TLPHW501RLXXPX		